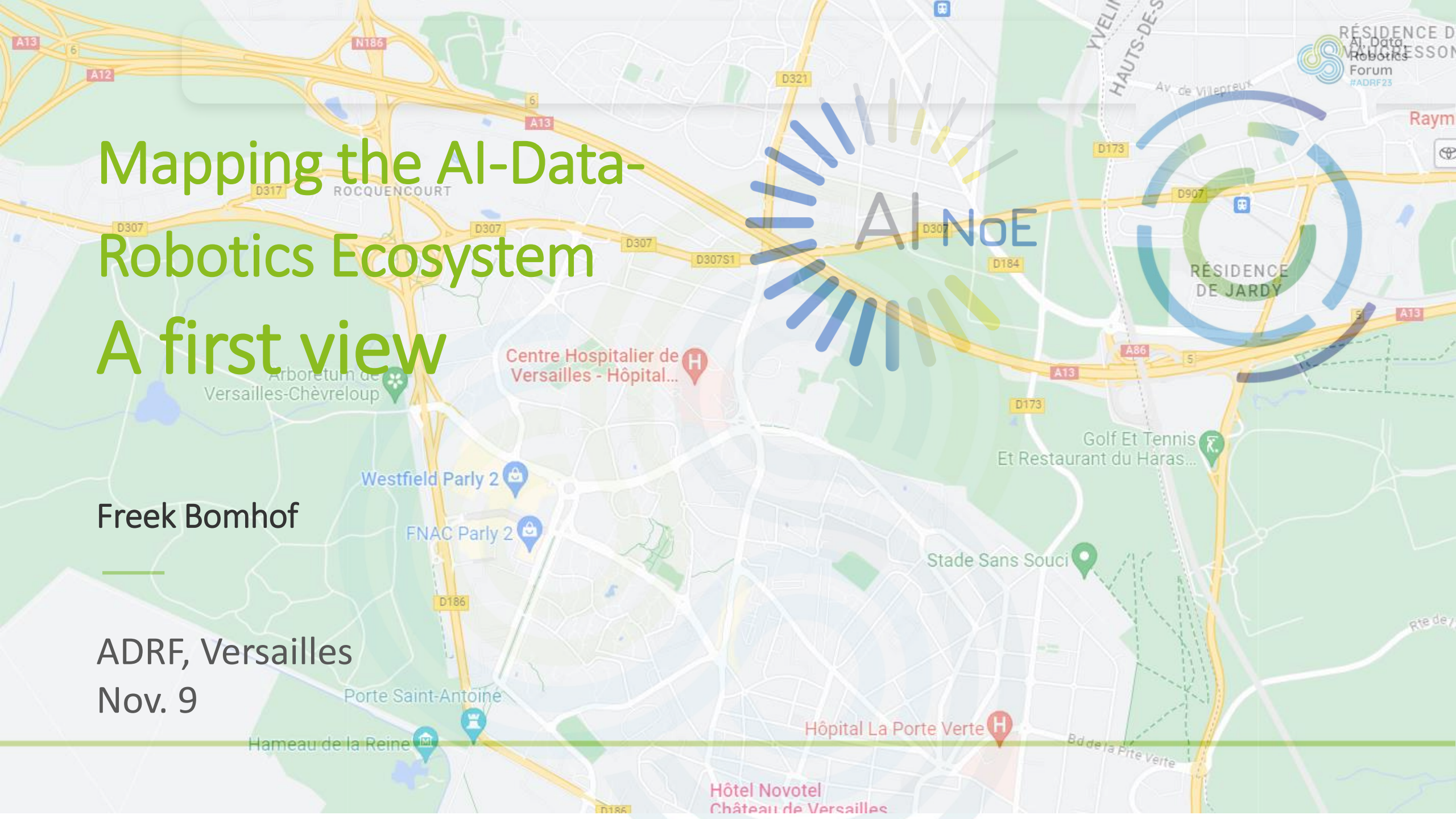


Mapping the AI-Data- Robotics Ecosystem A first view

Freek Bomhof

ADRF, Versailles
Nov. 9

AI NoE



What:

- Map the AI research excellence in Europe
- Organizations and application areas

How:

- VISION project took the task
- Input from 6 Networks of Excellence
- Data collected in survey

Community-driven process

HUMANE  AI NET

elise
European Network of AI Excellence Centres

euROBIN

VISION


TAILOR

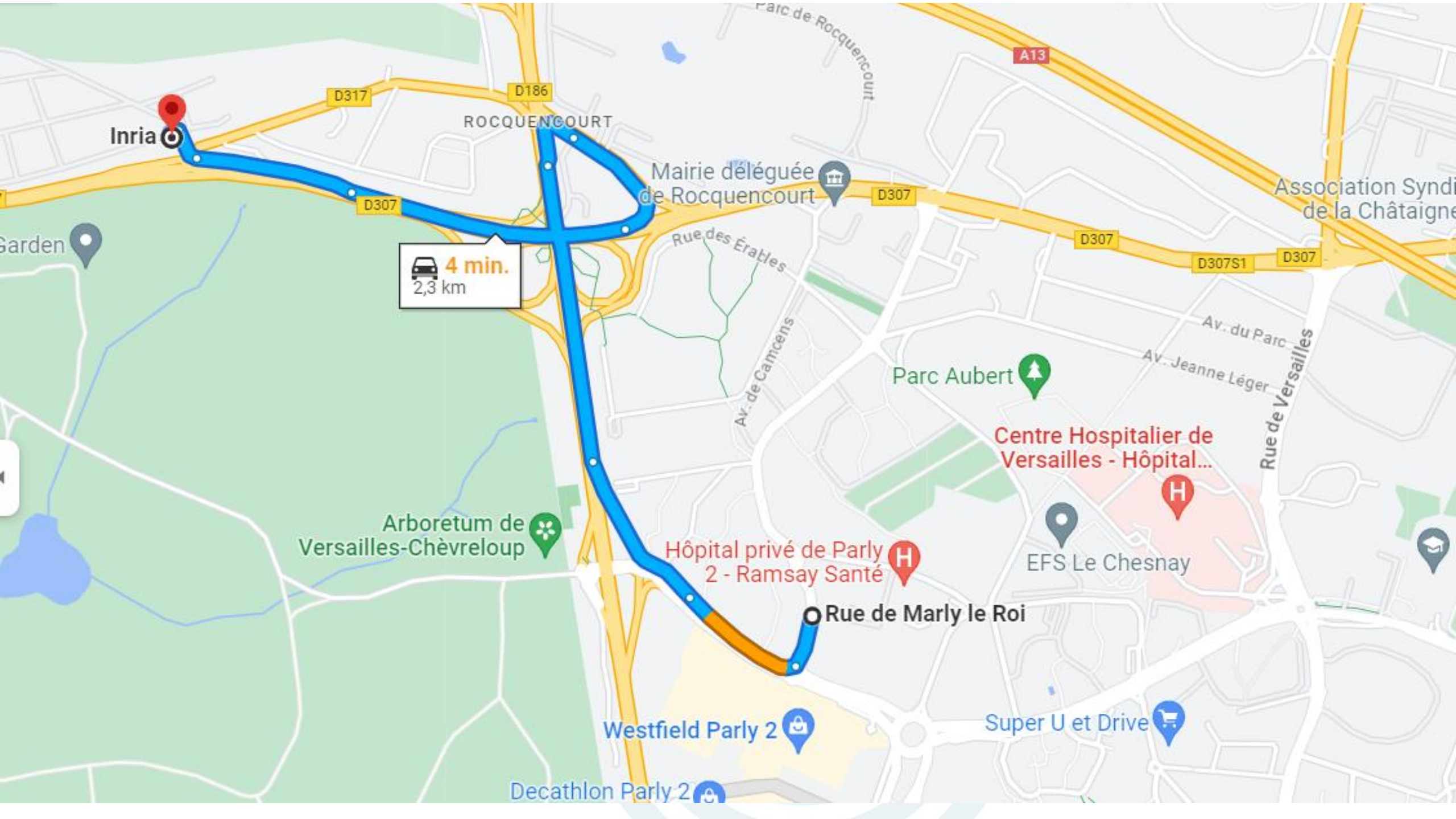


elsa
European Lighthouse
on Secure and Safe AI

AI4media
ARTIFICIAL INTELLIGENCE FOR
THE MEDIA AND SOCIETY

A map brings you
from A to B





Inria

4 min.
2,3 km

ROCQUENCOURT

Mairie déléguée
de Rocquencourt

Rue des Érables

Parc Aubert

Centre Hospitalier de
Versailles - Hôpital...

Hôpital privé de Parly
2 - Ramsay Santé

EFS Le Chesnay

Rue de Marly le Roi

Westfield Parly 2

Super U et Drive

Decathlon Parly 2

Arboretum de
Versailles-Chèvreloup

Association Syndi
de la Châtaigne

Av. du Parc

Av. Jeanne Léger

Rue de Versailles

A13

D317

D186

D307

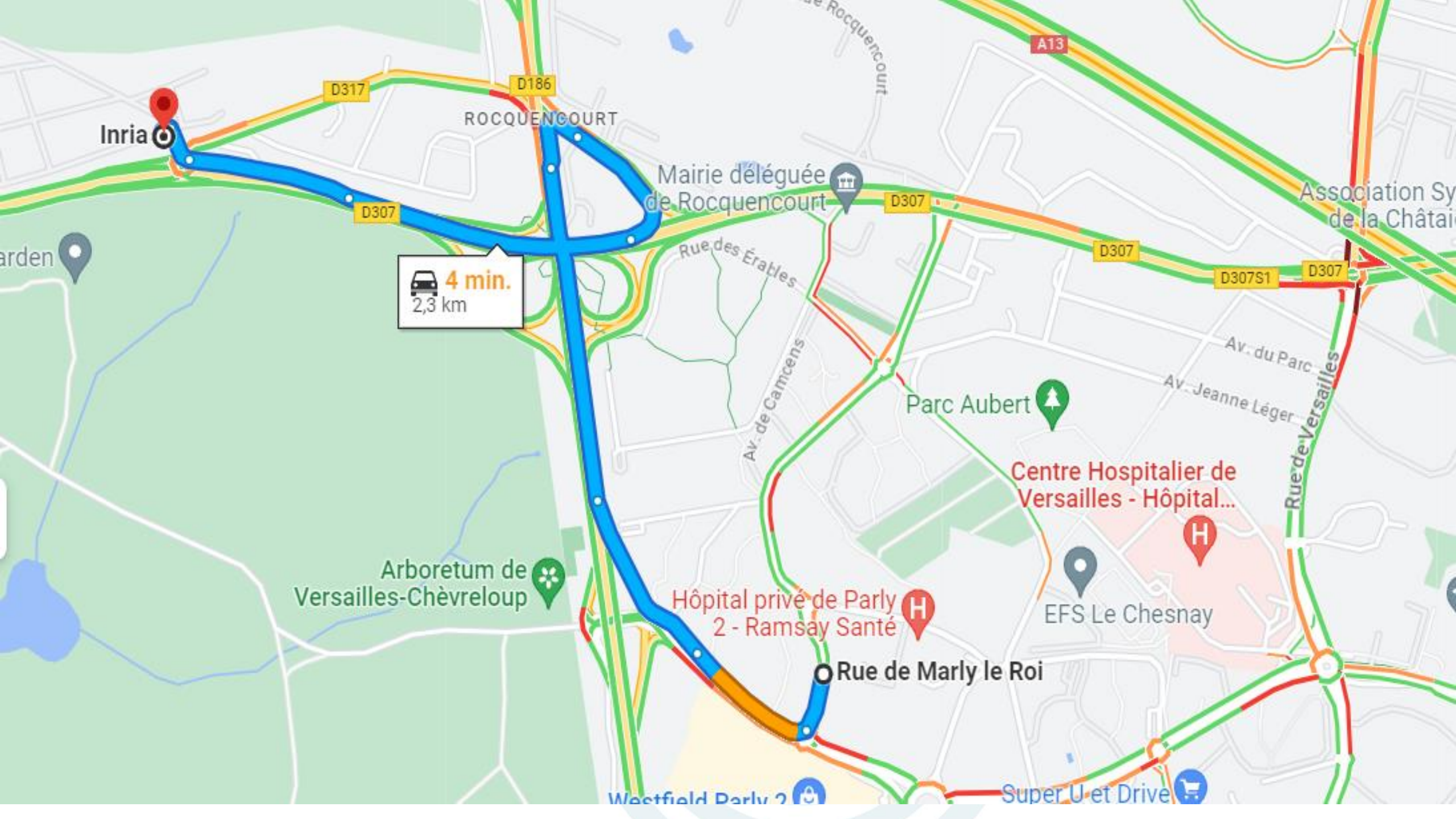
D307

D307S1

D307

To make a good
choice, you need
the right
information





Inria

4 min.
2,3 km

ROCQUENCOURT

Mairie déléguée
de Rocquencourt

Rue des Érables

Av. de Camcens

Parc Aubert

Centre Hospitalier de
Versailles - Hôpital...

Hôpital privé de Parly
2 - Ramsay Santé

EFS Le Chesnay

Rue de Marly le Roi

Arboretum de
Versailles-Chèvreloup

Westfield Parly 2

Super U et Drive

A13

D317

D186

D307

D307

D307S1

D307

Av. du Parc

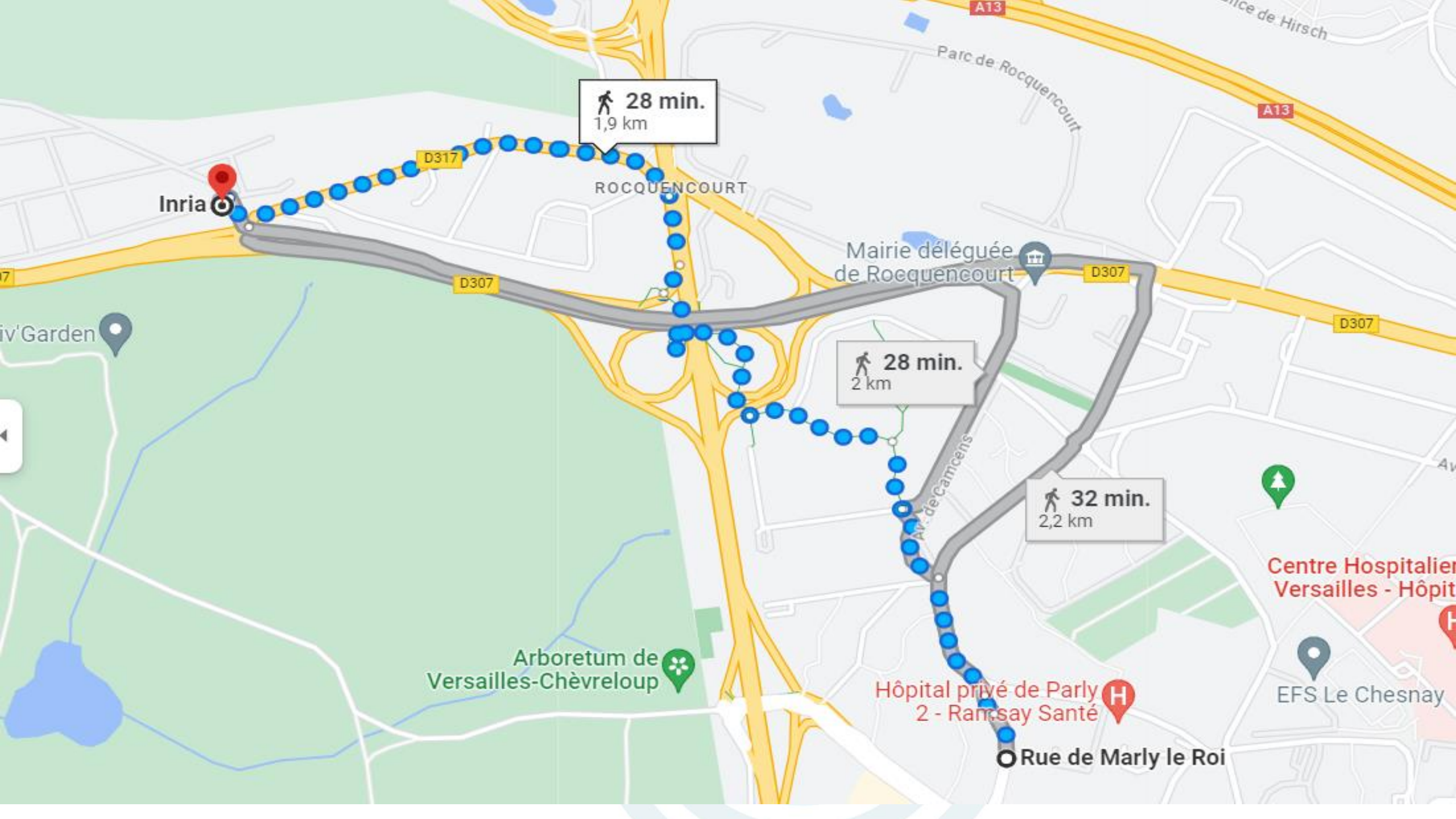
Av. Jeanne Léger

Rue de Versailles

Association Sy
de la Châta

You may want to
evaluate
alternative
transport





Inria

28 min.
1,9 km

ROCQUENCOURT

Mairie déléguée
de Rocquencourt

28 min.
2 km

32 min.
2,2 km

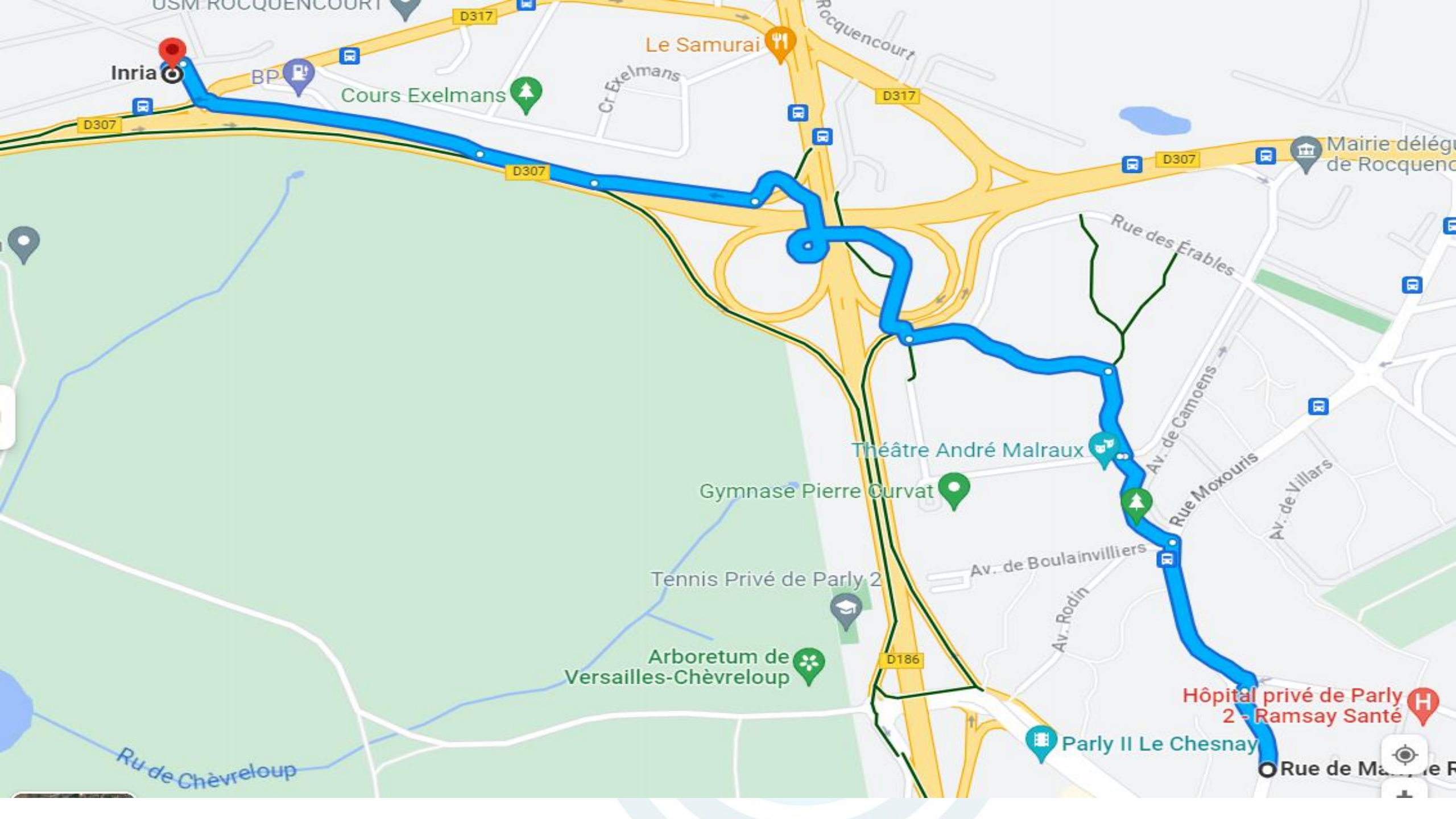
Arboretum de
Versailles-Chèvreloup

Hôpital privé de Parly
2 - Ramsay Santé

Centre Hospitalier
Versailles - Hôpital

EFS Le Chesnay

Rue de Marly le Roi



Inria

BP

Cours Exelmans

Le Samurai

Cr. Exelmans

D317

D307

D307

D307

Mairie délég.
de Rocquencourt

Rue des Érables

Théâtre André Malraux

Gymnase Pierre Curvat

Tennis Privé de Parly 2

Arboretum de
Versailles-Chèvreloup

Av. de Boulainvilliers

Rue Moxouris

Av. de Villars

Av. Rodin

D186

Hôpital privé de Parly
2 - Ramsay Santé

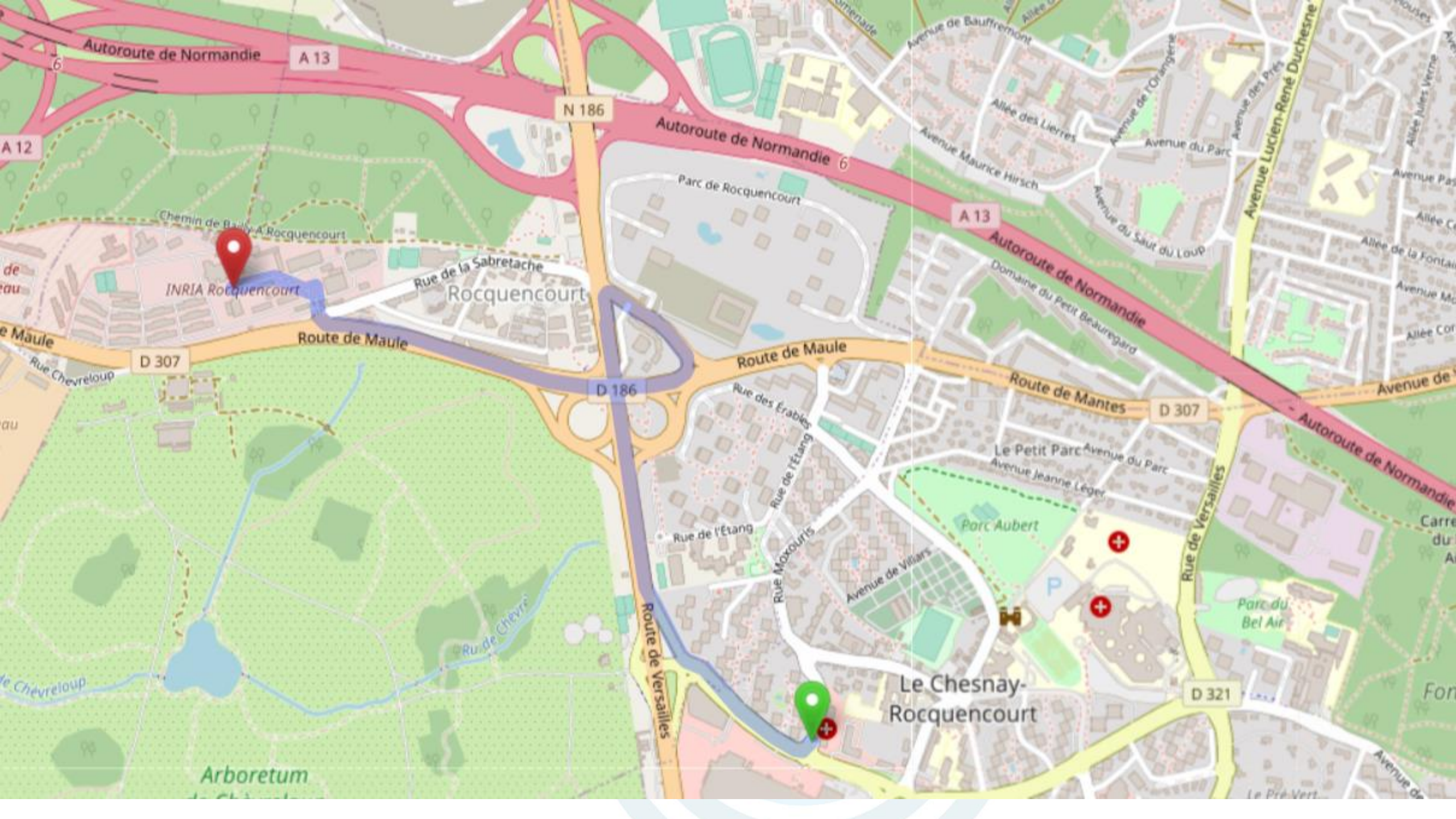
Parly II Le Chesnay

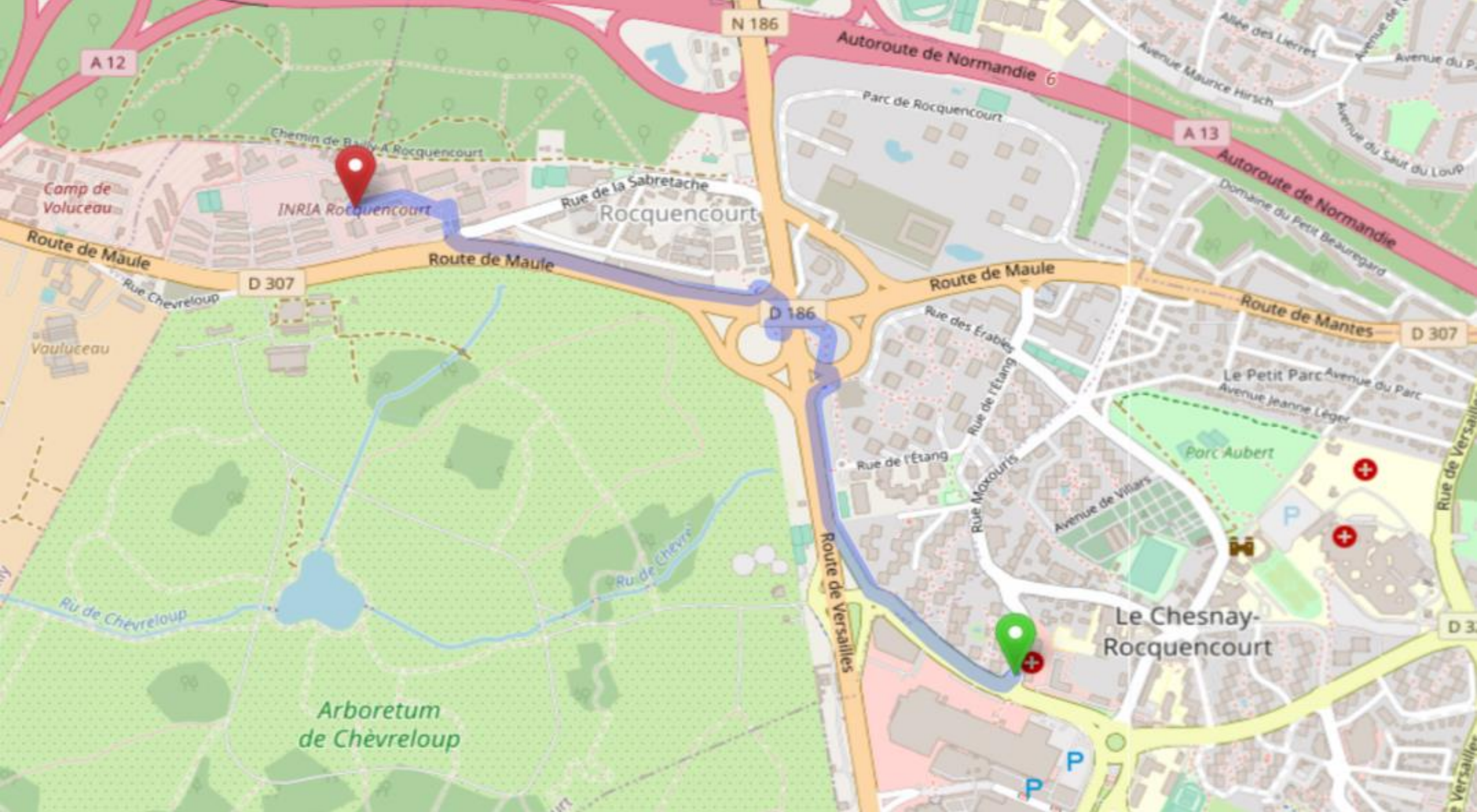
Ru. de Chèvreloup

Rue de M... de F...

You may even
want a better map







- Names of cities
- Names of streets
- Road type
- Quality of road, traffic density



- Categories of AI research
- Subtopics for AI research
- Categories of application areas
- Excellence in AI research

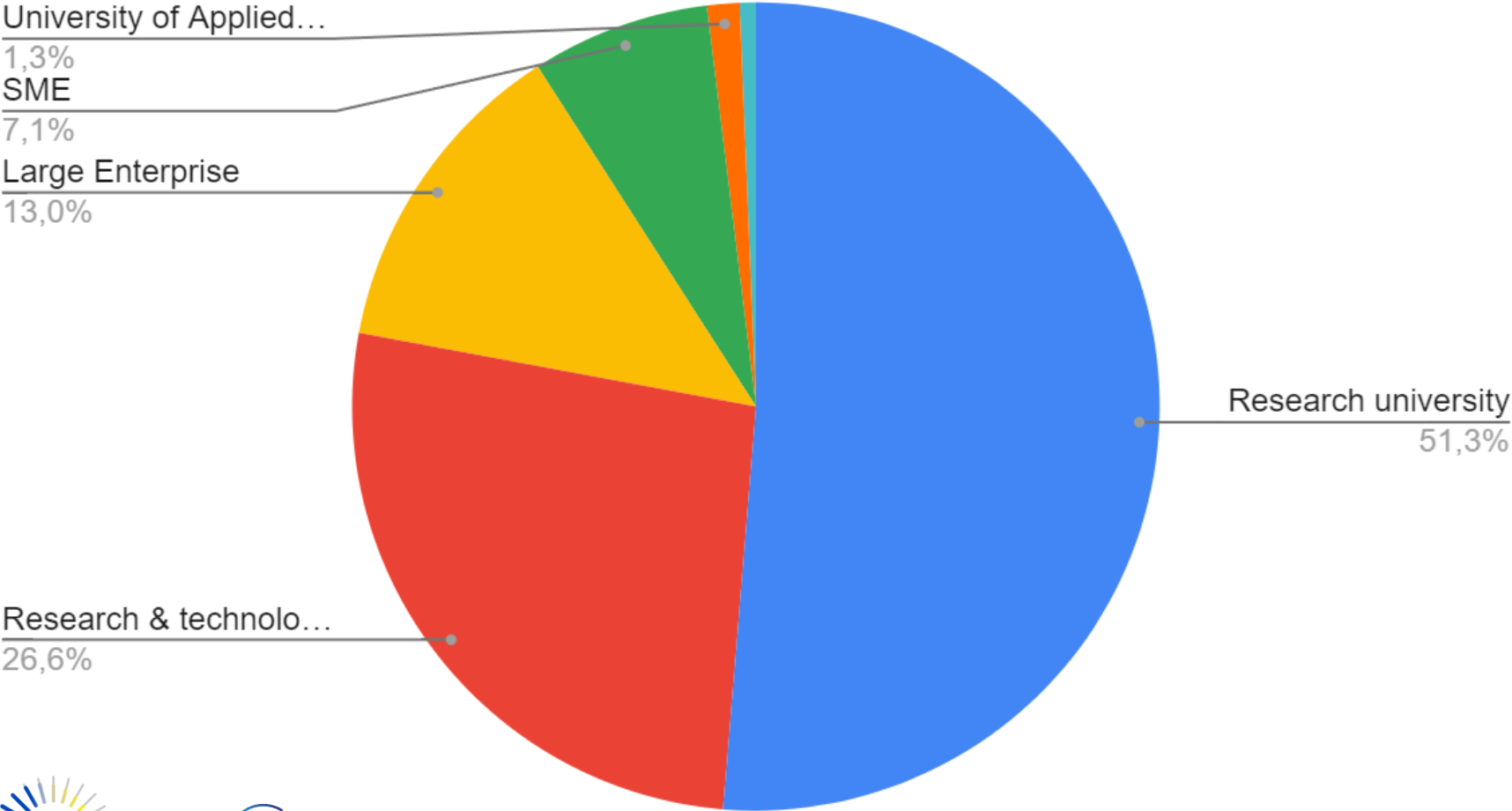
A map is not neutral

Research topics	
AI Hardware & High-Performance Computing	4
Computer Vision & Audition	36
Ethical, Legal, Social Aspects	34
Human- Machine Interaction & Cognition	32
Knowledge Representation & Management	17
Machine Learning	60
Multi-Agent Systems & Agent-Based Modelling	10
Planning, Routing & Scheduling	15
Reasoning	31
Robotics	19
Search & Optimisation	26
Speech & Natural Language Processing	27

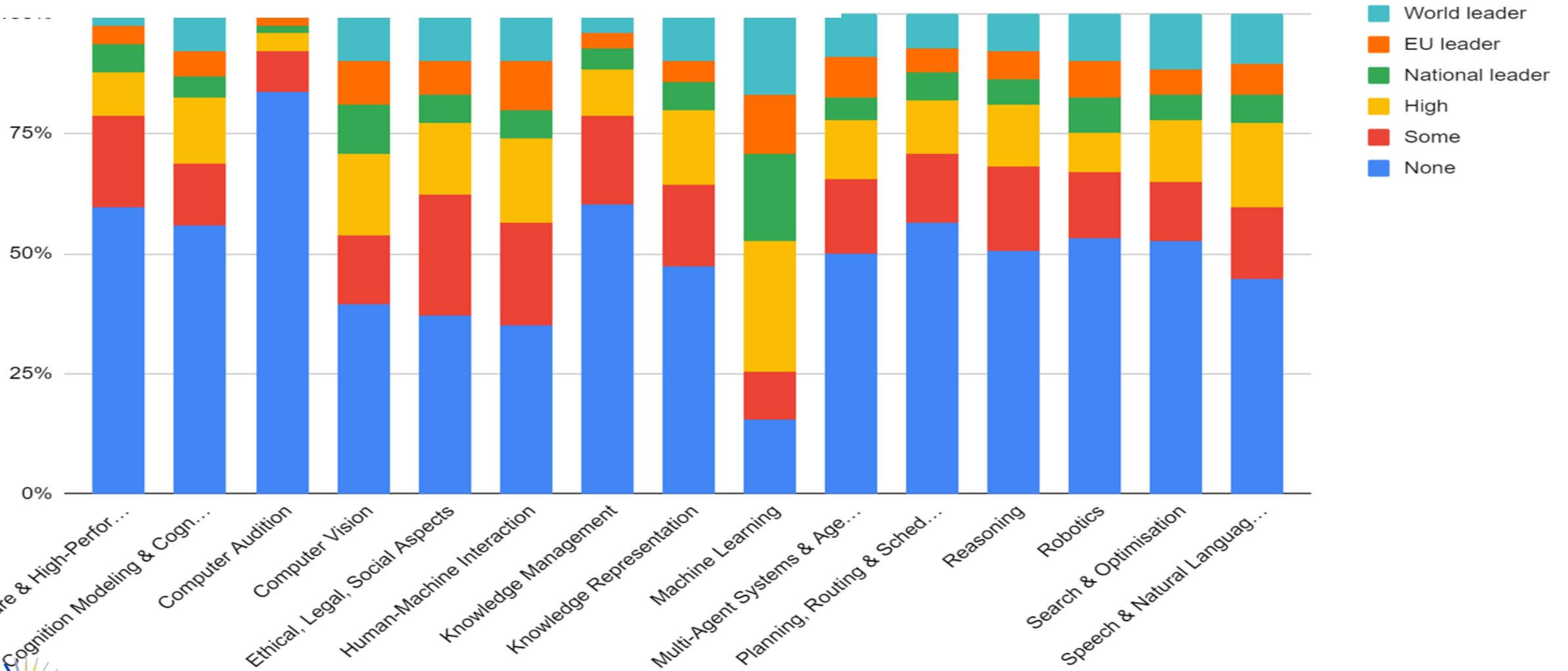


Application areas	
Agriculture & fisheries	9
Economy & financial markets/services	9
Environment, energy & sustainability	18
Health & wellbeing	12
ICT infrastructure	4
Industry	11
Learning & education	10
Media, communication, web & entertainment	16
Mobility & transportation	18
Public sector & citizen services	6
Safety & Security	8
Scientific research, design & engineering	6

Organisation types



Research topics



Who is doing what, and where?

The screenshot shows a web browser window displaying the 'EUROPEAN RESEARCH AND INNOVATION ECO-SYSTEM' website. The browser's address bar shows 'localhost:5173'. The website header includes the AI NoE logo and the title 'EUROPEAN RESEARCH AND INNOVATION ECO-SYSTEM'. The main content area features a map of Europe with numerous dark blue dots representing research nodes. To the left of the map is a sidebar with two sections: 'RESEARCH TOPICS' (indicated by a right-pointing arrow) and 'APPLICATION AREAS' (indicated by a downward-pointing arrow). The 'APPLICATION AREAS' section lists 14 categories, each with a horizontal bar chart showing the distribution of research nodes across Europe. The categories are: Scientific research, design & engineering; Health & wellbeing; Industry; Environment, energy & sustainability; Mobility & transportation; Media, communication, web & entertainment; Safety & security; ICT infrastructure; Learning & education; Ethical, Legal, Social Aspects; Economy & financial markets/services; and Agriculture & fisheries. At the bottom of the website, there is a footer with logos for VISION, elise, elsa (European Lighthouse on Secure and Safe AI), euROBIN, HUMANE AI NET, AI4media, and TAILOR.

`eu-ai-ecosystem.
tnods.nl`



... and how much?

EUROPEAN RESEARCH AND INNOVATION ECO-SYSTEM

RESEARCH TOPICS

APPLICATION AREAS

- Scientific research, design & engineering
- Health & wellbeing
- Industry
- Environment, energy & sustainability
- Mobility & transportation
- Media, communication, web & entertainment
- Safety & security**
- ICT infrastructure
- Learning & education
- Ethical, Legal, Social Aspects
- Economy & financial markets/services
- Agriculture & fisheries

LDO - Leonardo
Leonardo LABS

BUT - Brno University of Technology

VUA - Vrije Universiteit Amsterdam
Department of Computer Science

TU Delft - Delft University of Technology
Faculty of Technology, Policy, and Management

CEA - French Alternative Energies and Atomic Energy Commission
Laboratoire d'Intégration de Systèmes et des technologies (LIST) institute

PRALab - UNICA - University of Cagliari
Pattern Recognition and Applications Laboratory

fortiss - fortiss GmbH - Research Institute of the Free State of Bavaria for software-intensive systems

UNIMI - University of Milan
Dipartimento di Informatica

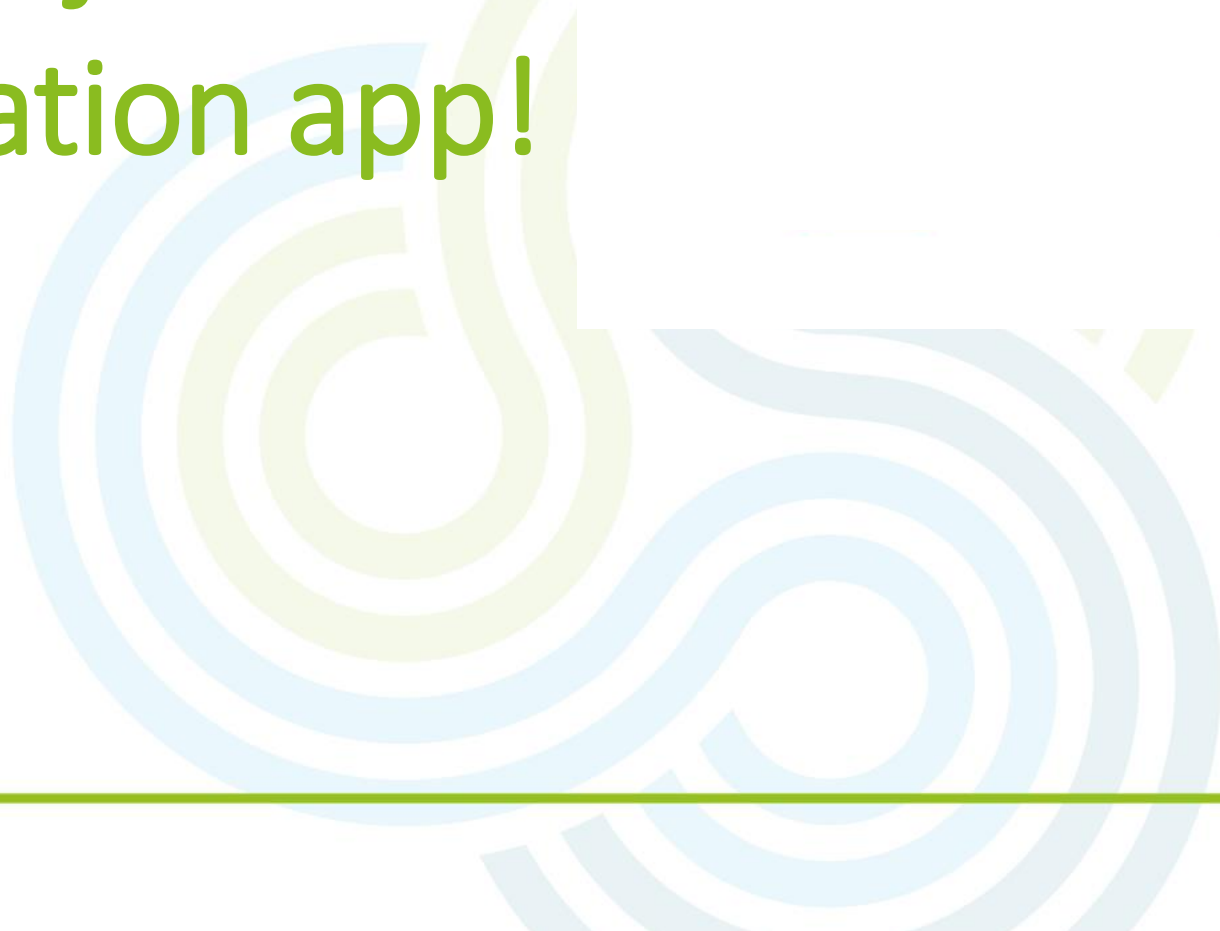
FBK - Bruno Kessler Foundation

VISION elise elsa European Lighthouse on Secure and Safe AI euROBIN HUMANE AI NET AI4media TAILOR

eu-ai-ecosystem.tnodes.nl



Now we just need
a navigation app!





AI, Data,
Robotics
Forum
#ADRF23

Thank you



adrforum.eu



[/company/adr-association](https://www.linkedin.com/company/adr-association)



[@adr-association](https://twitter.com/adr-association)



[Adra events](#)