



AI, Data and Robotics
ecosystem

Mapping AI-Data- Robotics Ecosystem

Anne Bergen, Iddo Bante

University of Twente



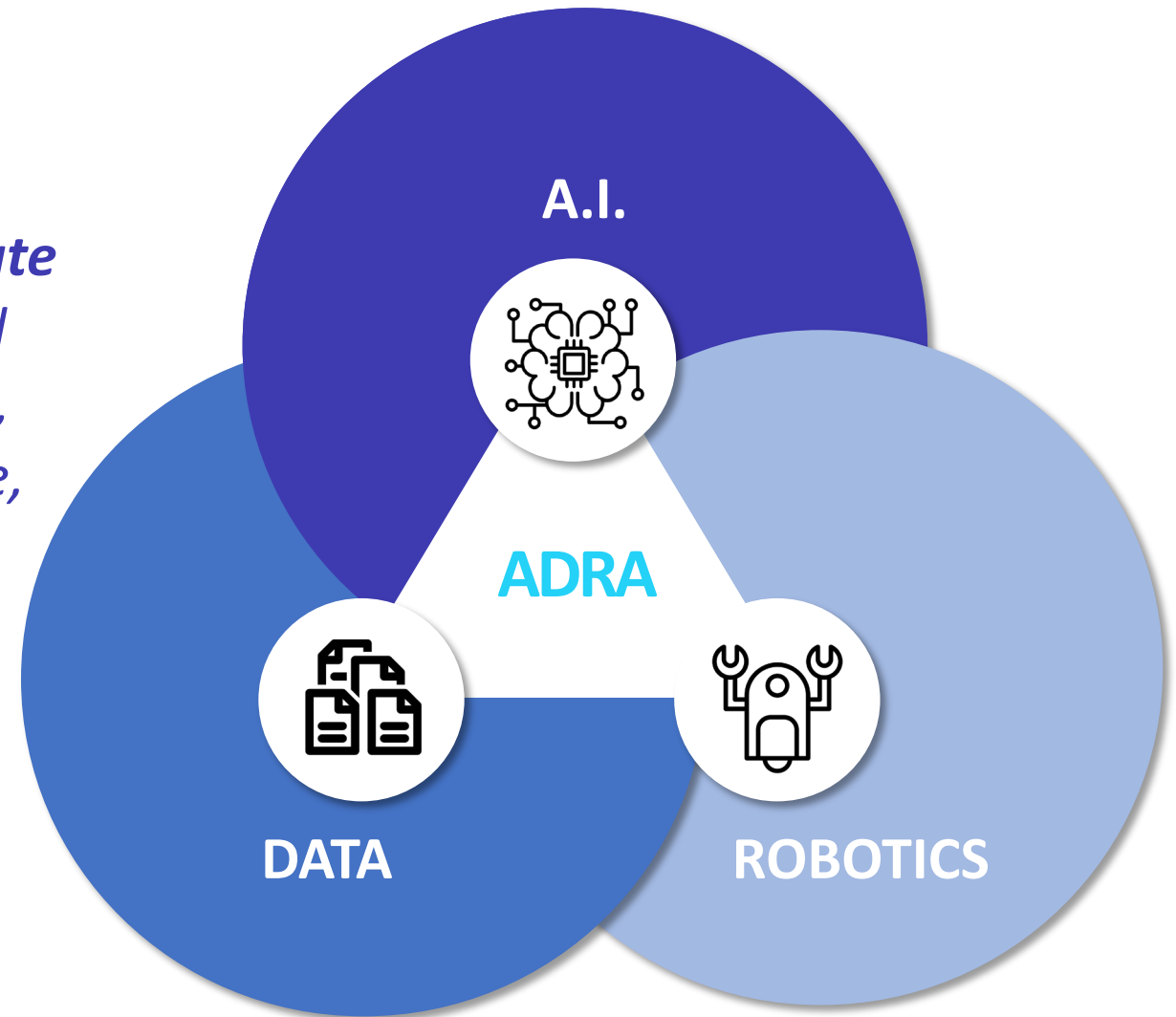
Funded by
the European Union

ADRA-e

*The overall objectives of Adra-e are to support the ADR Partnership in the **update and implementation of the SRIDA** and create the conditions for a sustainable, effective, multi-layered, comprehensive, and coherent **European AI, Data and Robotics ecosystem**.*

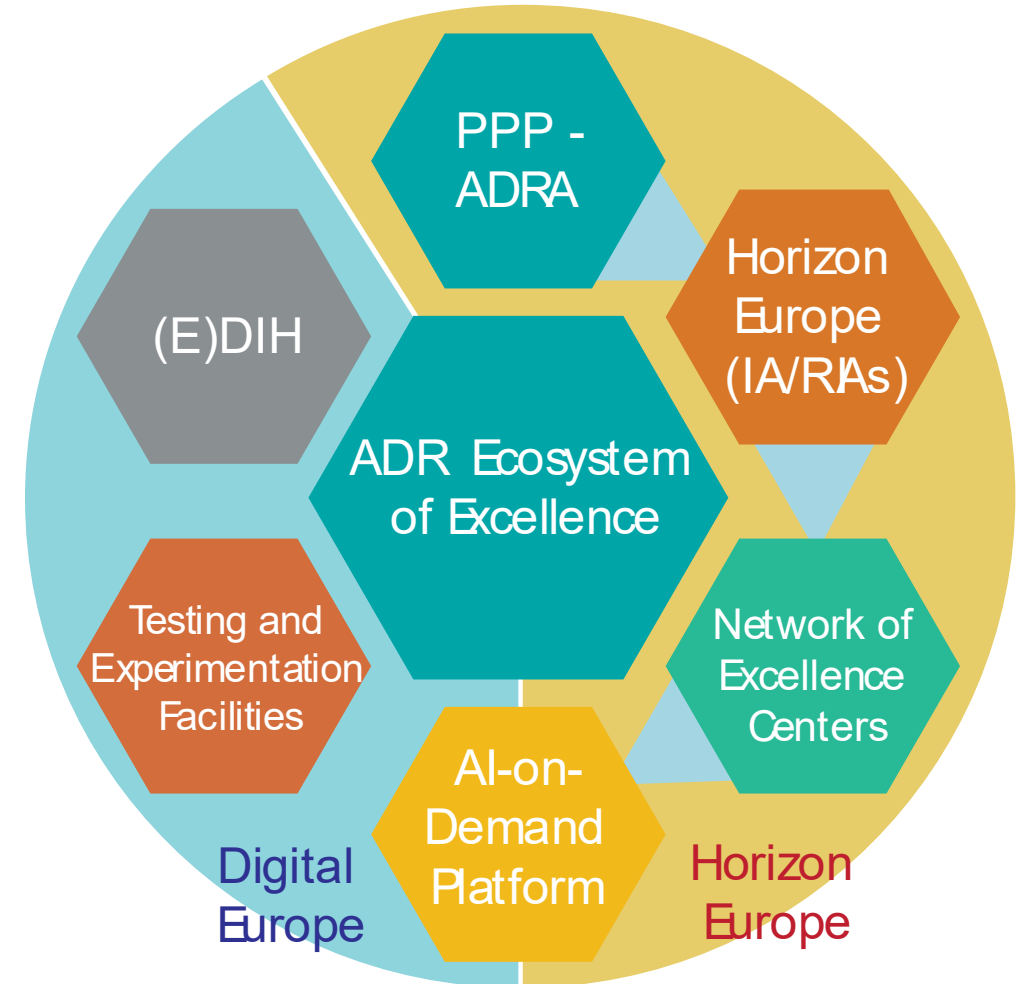
Task 2.1

Mapping and overview on major European and national initiatives in the field of AI, Data, Robotics



ADR Ecosystem of Excellence-in-ADR-Innovation

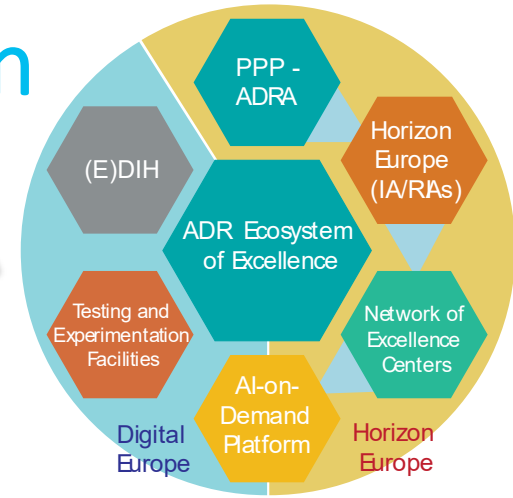
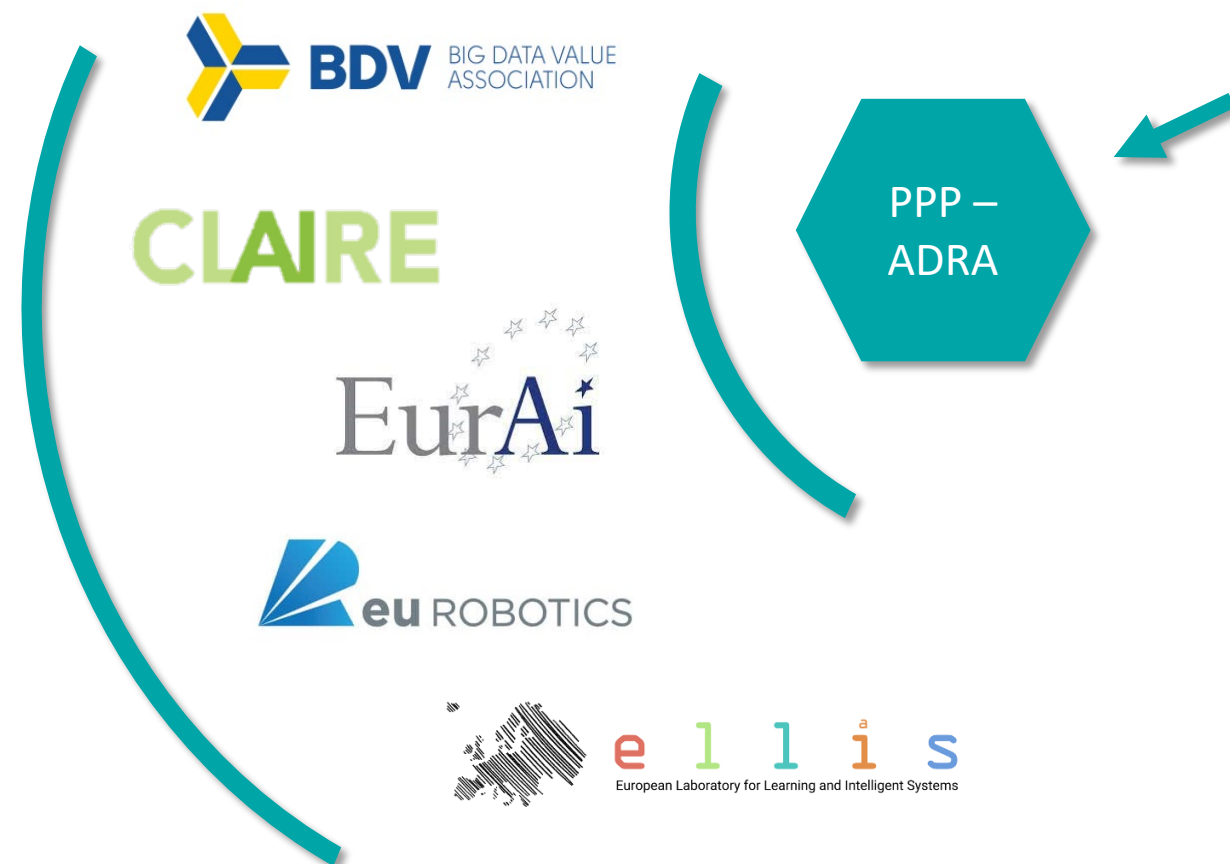
- Start with a pragmatic approach
- Focus on AI, data and robotics
- From low to higher TRL



ADR Ecosystem of Excellence-in-ADR-Innovation

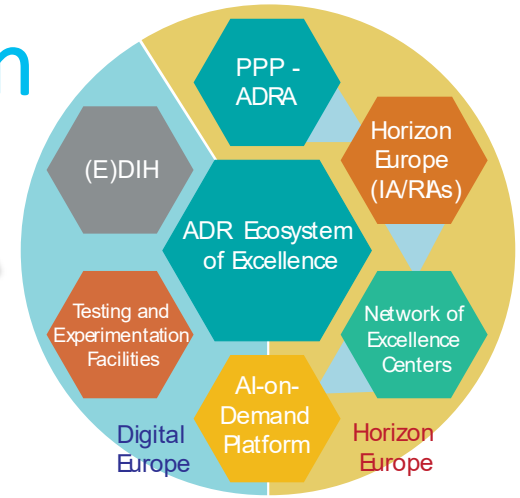
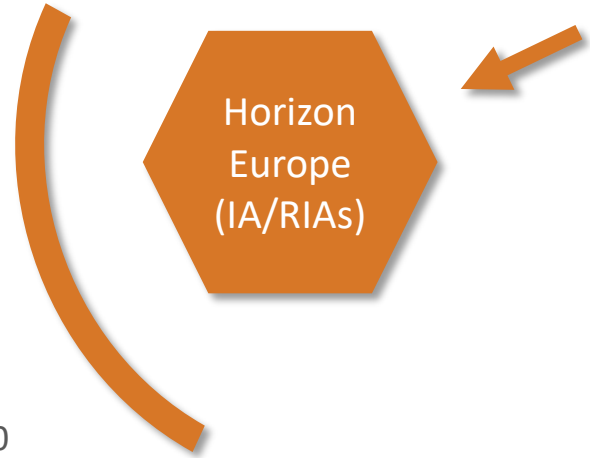
CLAIRE

- › Tech domain: AI
- › Research / Innovation
- › Many application domains
- › Academia, Industry
- › <https://claire-ai.org>
- › Contact person: ...
- › ...



ADR Ecosystem of Excellence-in-ADR-Innovation

- | | | | |
|---------------|-------------------|---------------------|-----------------|
| › GATEKEEPER | › STARLIGHT | › ECHO | › NGIO Entrust |
| › PHArA-ON | › Hi-Drive | › BY-COVID | › interTwin |
| › SMART BEAR | › DIAMONDS | › Smart4Health | › DT-GEO |
| › SHAPES | › PROFID | › InteropEHRate | › BioDT |
| › LEVEL-UP | › CoroPrevention | › SLEEP | › eBRAIN-Health |
| › RECLAIM | › ILIAD | › REVOLUTION | › NIVA |
| › UNITED | › INFINITECH | › iToBoS | › ExtremeXP |
| › MUSICA | › CYBELE | › MAESTRIA | › TEMA |
| › SHOW | › IoTwins | › AI-Mind | › CREXDATA |
| › PENELOPE | › DeepHealth | › DECIDER | › Data4Food2030 |
| › HosmartAI | › EVOLVE | › iPC | |
| › ODIN | › LEXIS | › VirtualBrainCloud | |
| › AICCELERATE | › MOOD | › PRIMAGE | |
| › AIDPATH | › VEO | › BD4NRG | |
| › TREEADS | › CONCORDIA | › SYNERGY | |
| › SILVANUS | › CyberSec4Europe | › PLATOON | |
| › FIRE-RES | › SPARTA | › BD4OPEM | |



IA + RIAs

Details: project title, area, country coordinator, keywords, sector/domain, description...

Budget > 10 M

ADR Ecosystem of Excellence-in-ADR-Innovation



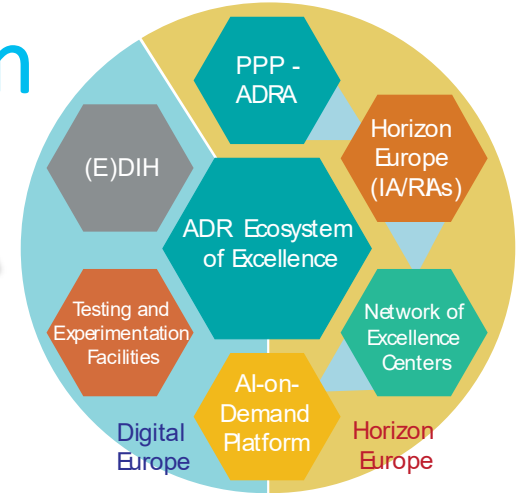
- › Tech domain: AI
- › CSA
- › <https://www.vision4ai.eu/project/>
- › Coordinator: Leiden University
- › Builds on CLAIRE / AI4EU...
- › ...



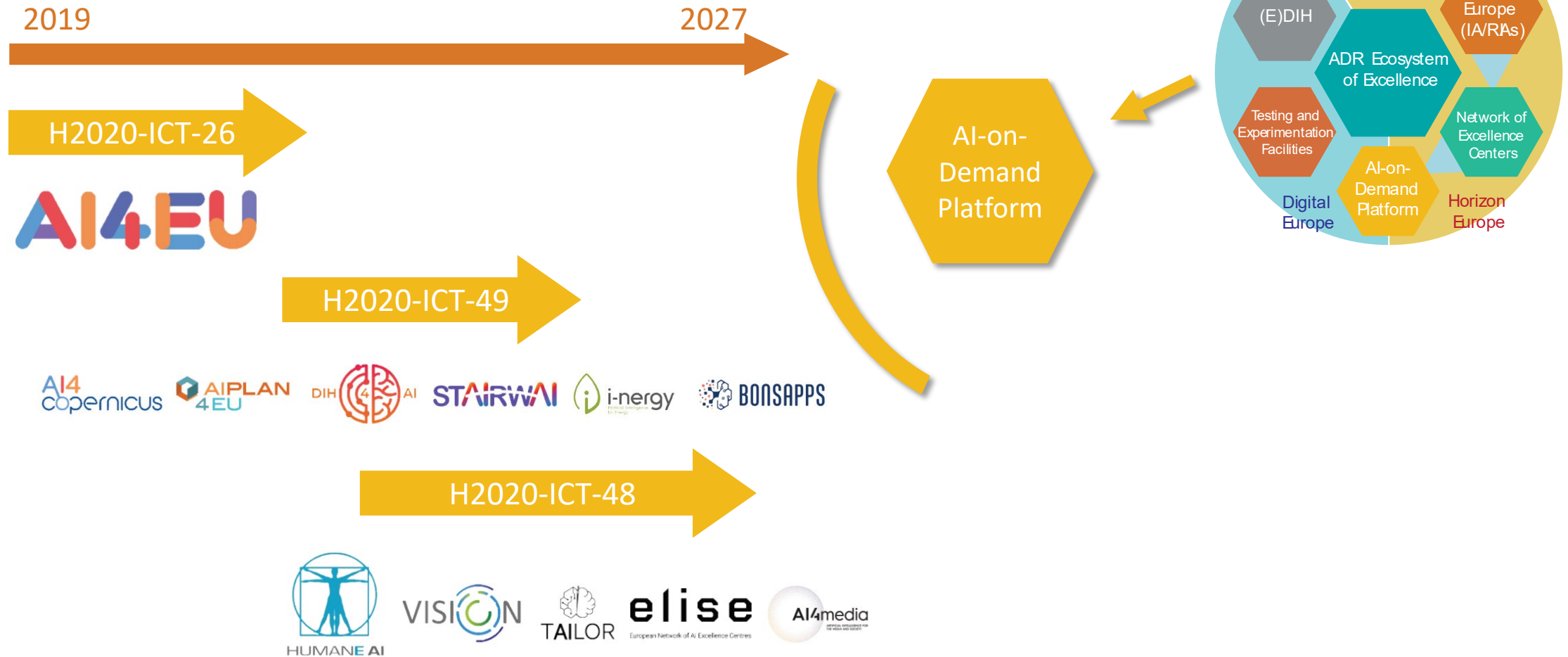
TAILOR

elise

European Network of AI Excellence Centres

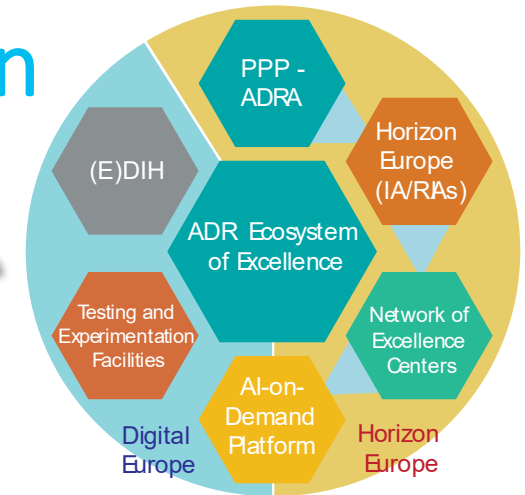
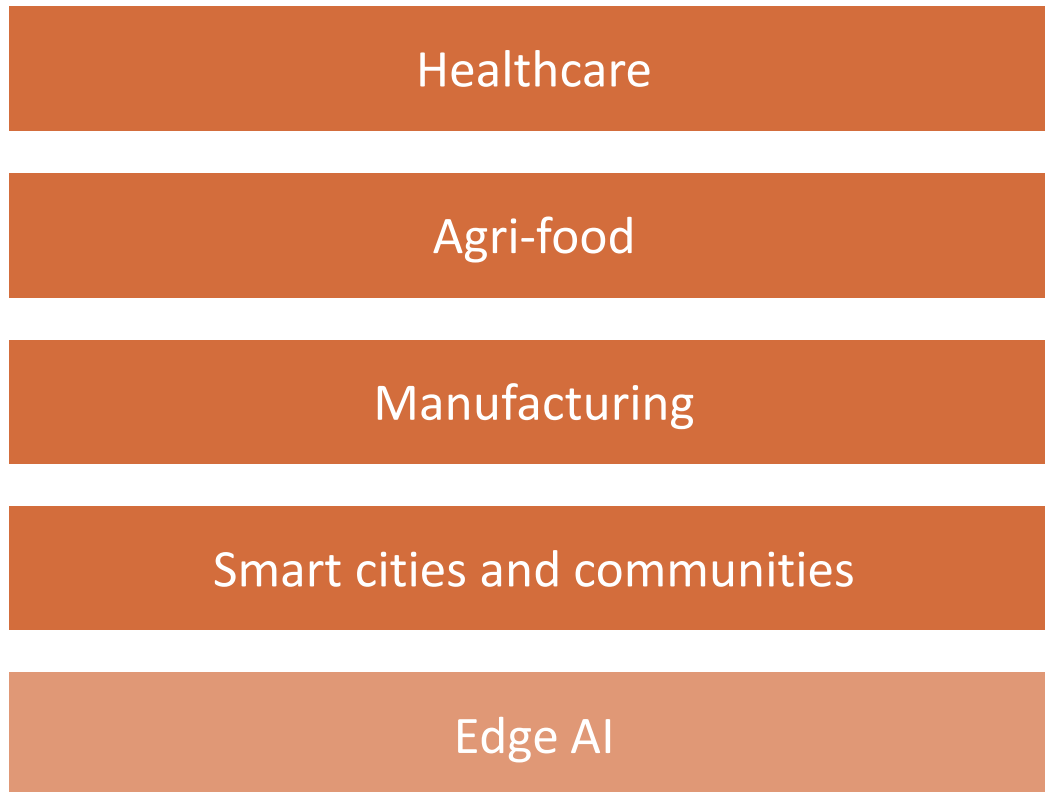


ADR Ecosystem of Excellence-in-ADR-Innovation

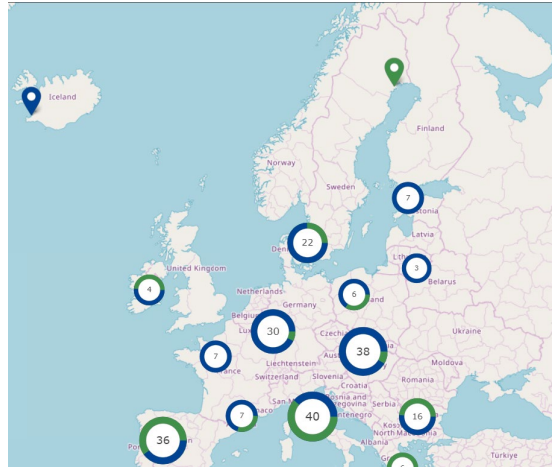


ADR Ecosystem of Excellence-in-ADR-Innovation

Digital Europe foresees sectorial TEFs

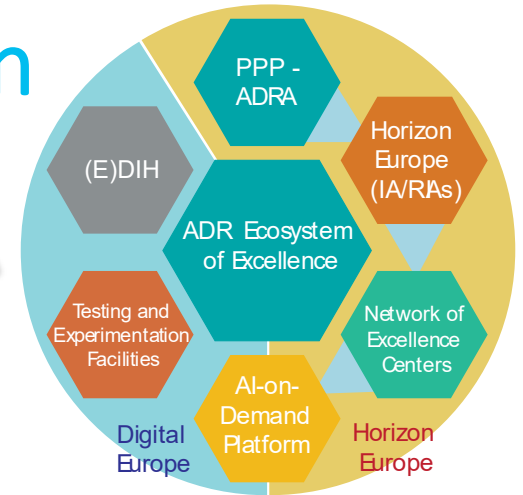
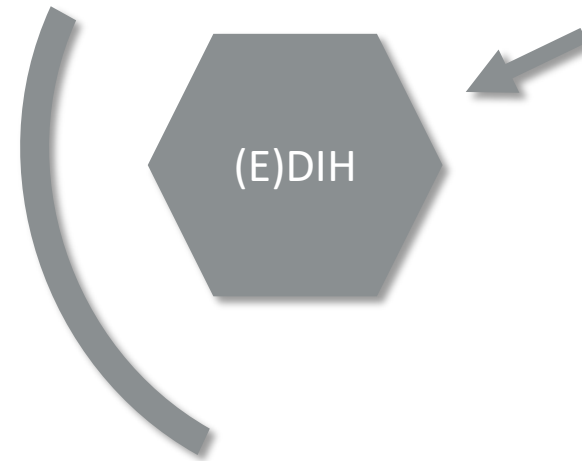


ADR Ecosystem of Excellence-in-ADR-Innovation



[EDIH Catalogue | European Digital Innovation Hubs Network \(europa.eu\)](#)

- Total: 228 EDIHs
- › Search Robotics: 40 DIHs
- › Search AI: 75 DIHs



Digital Transformation Accelerator (DTA)

- › For networking, cooperation and knowledge transfer between EDIHs
- › Manage online catalogue of EDIHs
- › Gateway to other initiatives

DIH networks



Next...

- Include national initiatives
- Make it easily accessible online and able to navigate

But! Need to answer a few key questions going forward

- Who is the user? How will they want to use it?
- How to keep it sustainable?





Different user needs

User	Needs
Adra community	Identify partners, develop strategies
Public authorities	Evaluate policies, identify strategic investments
SMEs	Benchmarking their business, find possible market partners, identify cheap shared infrastructures
Large Companies	Identify strategic investments, identify strategic enabling technologies, identify possible markets
Network organizations	Identify partners, identify possible markets, find shared infrastructures
Knowledge organizations	To find EU-partners for R&D, market unique infrastructures and expertise, find student exchange partnerships

Top voted answers ADRA-e on how you would use the cartography

- 1 Understanding the EU complexity
- 2 Analyse links between projects, organizations, companies
- 3 Getting an overview

Going forward

- Decide on user perspective
- Align with other initiatives
- Investigate sustainability of mapping



Thank you!